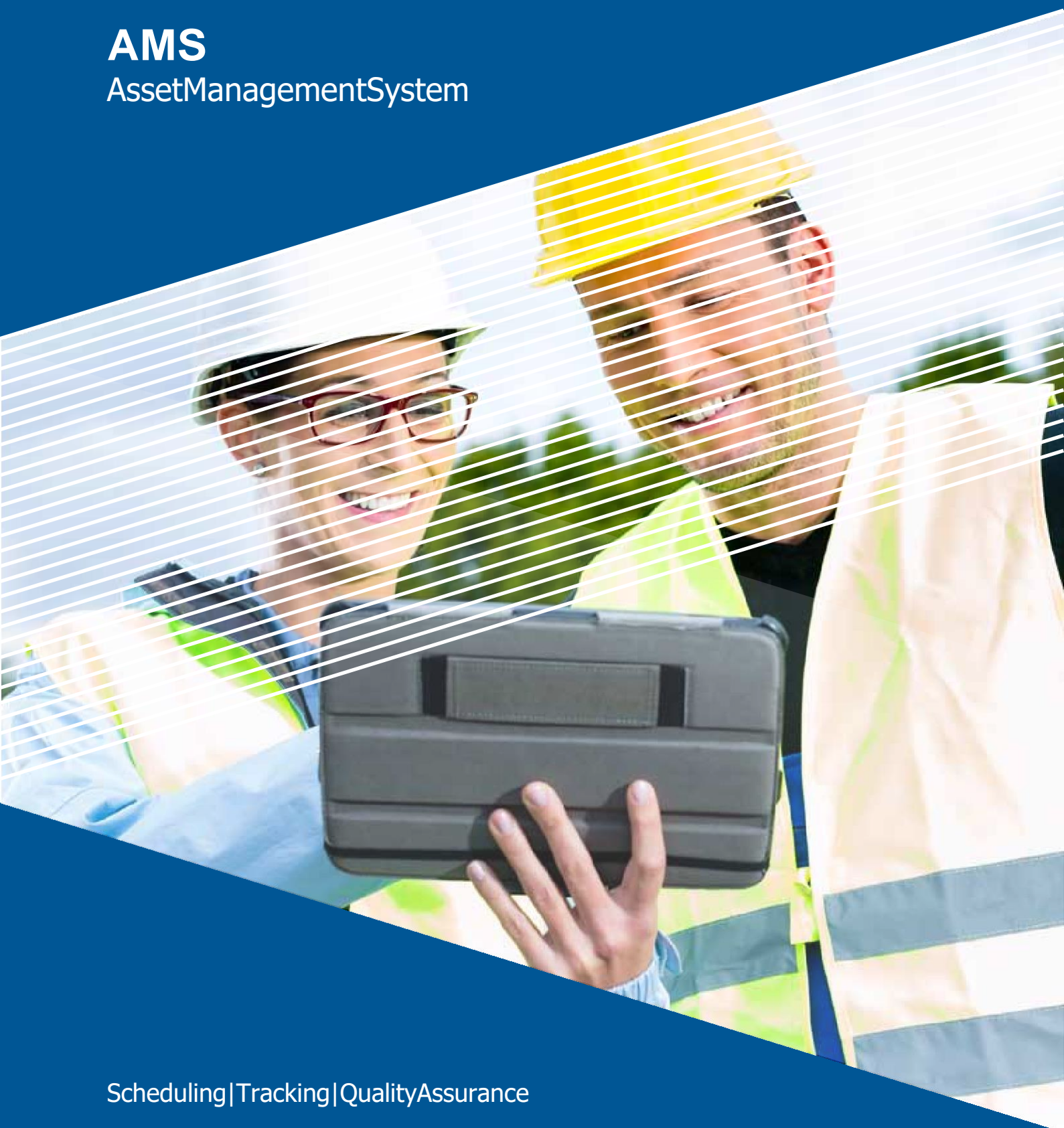


# AMS

AssetManagementSystem



Scheduling|Tracking|QualityAssurance

# A quality Approach to ASSet MAnAgeMent



Increasingly, industry is required to perform real-time monitoring of pollutants (either CEMS and/or ambient pollution monitoring) in order to support their licence to operate. The availability and reliability of data is of utmost importance for owners and operators of air quality monitoring stations managing air quality concerns.

Increasing importance is being placed on quality assurance and quality control with regard to the data received from air quality monitoring stations.

It is a proven fact that a systematic, pro-active, quality based approach to operation, maintenance and calibration of a monitoring system directly enhances the quality of the data collected.

Due to compliance and public pressure data is required to be gathered in a systematic, transparent and scientific defensible manner in line with acceptable standards, methods and procedures within a quality approved system.

In Australia, it is stated, as a minimum that the operation, maintenance and reporting activities should be performed in accordance with an approved quality management system and Australian Standards. In some cases NATA accreditation may be required.

The key criteria, as stated by Clean Air Asia, for robust air quality management systems and data collection include:

- Ability to properly plan and implement an AQ monitoring network to a compatible international standard,
- Ability to plan and implement a QA/QC process,
- Ability to disseminate AQ monitoring data and analytical results to stakeholders,
- Ability to utilise the AQ monitoring results to improve AQ control policy,
- Ability to provide manpower and financial resources to sustain the AQ monitoring system.

Ecotech's AMS provides a bespoke solution to these challenges and criteria for success.

## AMS—ASSETMANAGEMENTSYSTEM

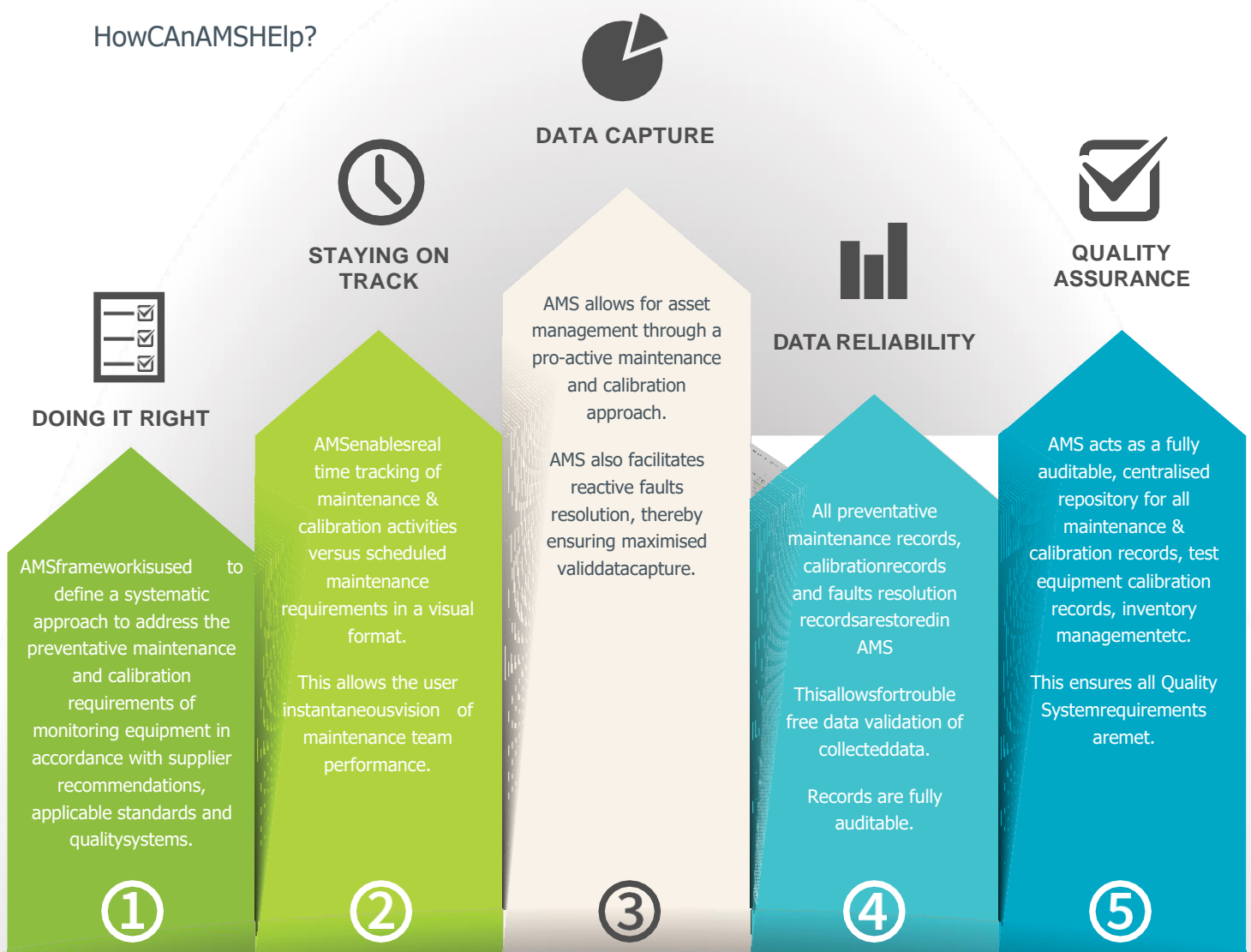
AMS provides a critical tool to manage maintenance scheduling down to task level as well as a central solution where all relevant calibration and maintenance records can be stored. This greatly facilitates any internal or external audit process and improves access to records for data validation. The system can be set up to comply to manufacturers recommendations, AS/NZ standards and NATA requirements. The network operator is therefore assured that all relevant maintenance and calibration activities are covered and performed in a timely manner, ensuring optimal data capture rates. This ability is particularly relevant in today's time

poor world allowing for the facilitation of efficient management of any environmental monitoring network to free up valuable time but more importantly avoiding non-compliance penalties.

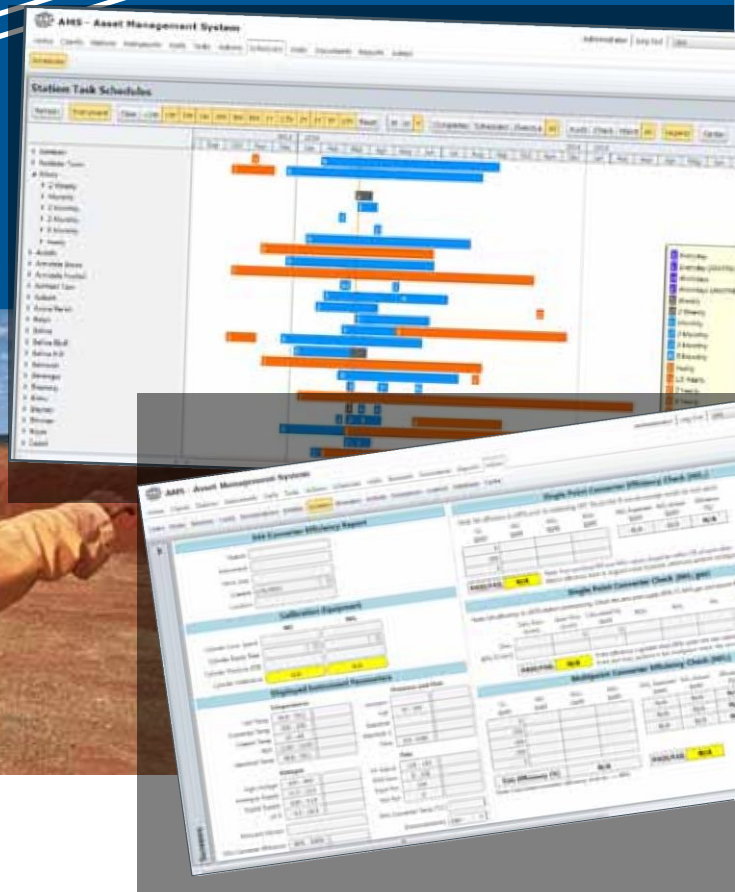
AMS also assists with the following applications:

- Project Management,
- Contract/delivery accountability,
- Expenditure control,
- Quality Assurance,
- Health & Safety compliance, and,
- Inventory management.

### How Can AMS Help?



# Who Should use AMS?



**Clients** - the maintenance plan provides a clear outline of the work that is agreed on, and the schedules provide an overview of progress as well as justification for invoices/expense (routine maintenance, as well as non-routine parts and servicing costs)

**Consultants/project Managers** - help to design the work requirement and manage progress on the monitoring project, as well as provides records to investigate any data issues.

**Sub-contractors/Technical Staff** - helps to understand the scope, timing and extent of maintenance required, and provides a repository for recording activities using the QA system

**QA staff** - provides auditable records in line with the QA system

**Regulators/public** - provides assurance that the stations are being properly maintained to produce the best possible outcomes in terms of data availability and reliability.



## CUSTOMER SUCCESS

Ecotech is in the process of implementing an AMS solution at a large smelting operation. This is a joint effort to manage preventative and unscheduled maintenance tasks and resources in accordance with Australian Standards and Ecotech's NATA accreditation. Early feedback is that it has been very well received with potential expansion forecast.

AMS is also being installed as part of a large tunnel construction project in Australia. The system will manage the maintenance and calibration tasks of all air quality and meteorological instrumentation deployed on this project, ensuring that all maintenance and calibration tasks are documented in line with Ecotech's NATA quality assurance processes.

Enviro Exceltech Sdn. Bhd.

Address: A-G-9, Univ 360 Place, Jalan Raya 2, Taman Serdang Jaya, 43300 Seri Kembangan, Selangor, Malaysia.

T: 03-8959 8509

info@eetsb.com [www.ecotech.com.au](http://www.ecotech.com.au)

### ecotech Pty Ltd

t (Australia) 1300364946

t (International) +61397307800

e [info@ecotech.com](mailto:info@ecotech.com)

[www.ecotech.com.au](http://www.ecotech.com.au)

### our offices:

Melbourne | Sydney | Brisbane | Perth | Karratha | Port Hedland | Auckland © Ecotech March 2014 - BRO5008-AMS



WORLD RECOGNISED  
ACCREDITATION  
Accredited for compliance  
with ISO/IEC 17025

Accreditation No. 14184